



CASE WESTERN RESERVE
UNIVERSITY

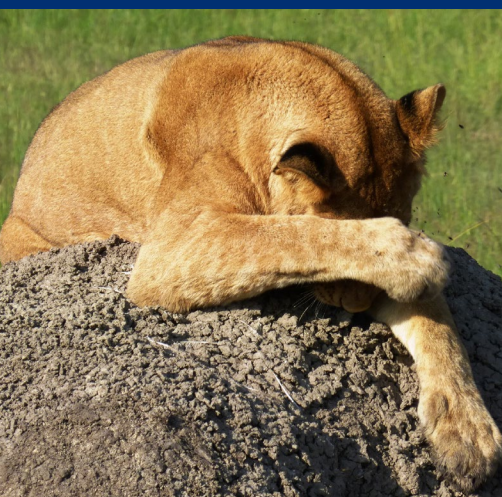
Early Bird Signup Discount: \$750
savings before September 15, 2025

Gorillas in the Rift

An Adventure in Uganda

Entebbe • Murchison Falls • Kibale National Park • Queen Elizabeth National Park • Bwindi Impenetrable Forest

May 18–28, 2026



Dear CWRU Alumni and Friends,

Join fellow alumni on this once-in-a-lifetime journey to Uganda, fondly referred to as the "Pearl of Africa" by Winston Churchill. Home to just over a thousand mountain gorillas in this region, Uganda's ancient forests provide a sanctuary for these magnificent creatures. This exclusive trip offers the rare opportunity to observe mountain gorillas and other primates up close in their natural habitat, while also immersing yourself in the rich history and vibrant cultural heritage of this extraordinary country.

Embark on an extraordinary journey through Uganda, a land of breathtaking landscapes, rich wildlife, and unforgettable experiences. Your adventure begins in **Entebbe**, a charming town on the shores of Lake Victoria, just a stone's throw from Kampala, Uganda's vibrant capital. Known as the gateway to the interior, Kampala's seven hills offer a captivating introduction to this diverse region.

From there, travel to **Murchison Falls National Park**, the iconic filming site of *The African Queen* starring Humphrey Bogart. Here, the mighty Victoria Nile slices through the park and surges through a narrow 8-meter (26.2-foot) gorge, creating the thunderous Murchison Falls. This park is a haven for East African wildlife and bird enthusiasts alike.

Next, journey to **Kibale Forest**, one of Uganda's most picturesque and biodiverse tropical forests. Home to 13 primate species, including chimpanzees, it offers an adrenaline-pumping adventure as you listen to their lively chatter echoing through the canopy while they forage for fruit and berries.

As you continue your exploration, pass by the majestic **Rwenzori Mountains**—or Mountains of the Moon—Africa's third-highest peak and a UNESCO World Heritage Site—on your way to **Queen Elizabeth National Park**. Named after Queen Elizabeth II, this renowned park is famous for its unique tree-climbing lions and diverse ecosystems.

The highlight of your journey awaits in the misty hills of **Bwindi Impenetrable Forest**, home to nearly half of the world's population of mountain gorillas. Trek through this dense forest for a once-in-a-lifetime encounter with these gentle giants, our closest relatives in the animal kingdom.

For those looking to extend the adventure, we offer optional safaris to Kenya's Maasai Mara or additional gorilla trekking in Rwanda. Details are provided below, and Immersion Journeys is happy to help you customize a pre- or post-trip experience tailored to your preferences.

Space is limited for this exclusive experience, so we encourage you to reserve your spot today by completing the enclosed reservation form or contacting us directly. You can also reserve your spot [online](#).

Your unforgettable journey awaits!

Warm regards,

Bradford W. Crews

Bradford W. Crews, MNO '21
Associate Vice President, Alumni Relations
Case Western Reserve University

*For more information about this tour, contact
Immersion Journeys at (917) 686-2620 or
email info@immersionjourneys.com.*

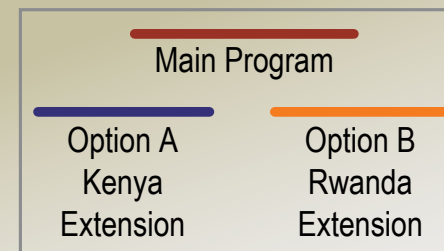
TOUR HIGHLIGHTS

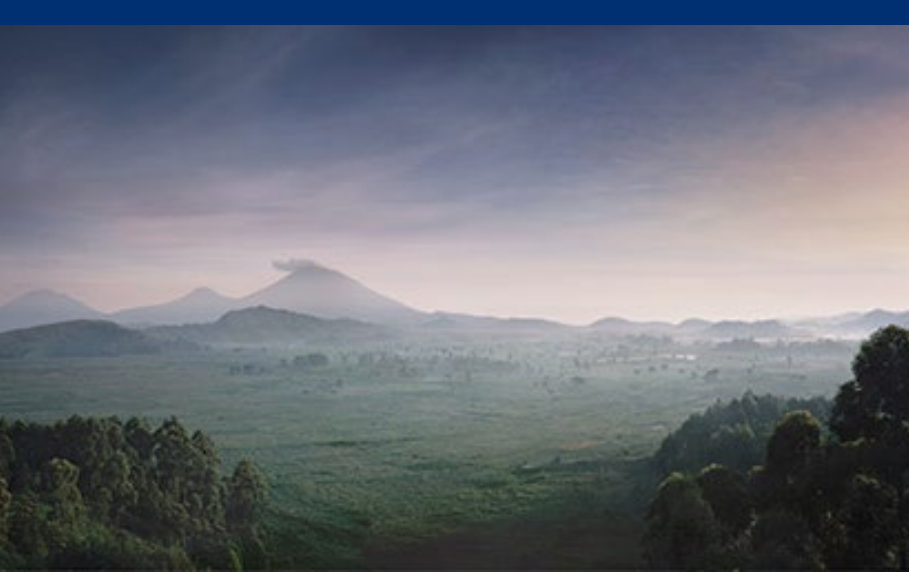
Embark on an unforgettable adventure through Uganda, a land of unparalleled natural beauty and cultural richness.

- **Sail into the Sunset:** Enjoy a serene sunset cruise on Lake Victoria, Africa's largest freshwater lake, spanning the borders of three countries.
- **Encounter Majestic Primates:** Come face-to-face with endangered mountain gorillas in Bwindi Impenetrable Forest and trek to observe chimpanzees in Kibale National Park. Learn about Uganda's pioneering efforts in great ape and primate conservation.
- **Explore Uganda's Wildlife:** Discover the incredible biodiversity of Murchison Falls and Queen Elizabeth National Parks, home to a variety of animal and bird species, including the renowned tree-climbing lions.
- **Immerse in Local Culture:** Experience the vibrant music, dance, and traditions of Uganda, connecting with its warm and welcoming people.

Age Limit: As per park regulations, guests must be at least 15 years of age to participate in chimpanzee and gorilla treks and must be accompanied by a parent or guardian.

Activity Level: Trekking for chimpanzees and gorillas can be physically demanding. Trails often involve muddy, uneven paths and moderate climbs depending on the gorilla nest location. Guests should assess their stamina and be comfortable navigating these conditions. While park rangers and porters are available for support, participants should be able to walk independently with minimal assistance. We recommend consulting your doctor to evaluate your physical readiness for this adventure.





PROGRAM ITINERARY

May 17, 2026 — U.S. | Entebbe, Uganda

Depart the U.S. for Entebbe (flights not included)

******This is a recommended departure date. Should you wish to arrive early, please contact Immersion Journeys. The cost for the early arrival hotel is \$320 per night inclusive of breakfast and taxes.

May 18 — Arrival Entebbe

Upon arrival in Entebbe, you will be greeted and transferred to your hotel to relax and recover from your journey. In the evening, meet your fellow travelers at a cocktail reception to kick off this unforgettable adventure.

Overnight: [Protea Hotel](#) (Cocktail Reception)

May 19 — Entebbe/ Lake Victoria Sunset Cruise

Morning at leisure to rest after your long flight.

Later in the afternoon, enjoy a cruise on Lake Victoria – Africa's largest lake by area. In terms of volume, Lake Victoria is the world's ninth largest continental lake. Enjoy welcome cocktails and hors d'oeuvres with your fellow travelers.

This activity will depend on the weather. In case of inclement weather, the cocktails will be hosted at the hotel. *Overnight:* [Protea Hotel](#) (Breakfast, Cocktail Reception)

May 20 — Entebbe / Murchison Falls National Park

Head northwest to Murchison Falls National Park, with a stop at the Ziwa Rhino Sanctuary, a vital effort to reintroduce rhinos to Uganda. Arrive at your lodge along the riverbank on the park's northeastern edge. Murchison Falls is home to the mighty Nile River, which squeezes through a narrow gorge to create the thunderous falls and boasts a rich array of wildlife, including the Big Five.

Overnight: [Paraa Safari Lodge](#) (B, L, D)

May 21 — Murchison Falls National Park

Embark on an early morning game drive through the Delta Circuit, where you may encounter elusive leopards, Jackson's hartebeest, Uganda kobs, and defassa waterbuck, along with giraffes, oribi, and buffalo.



In the afternoon, enjoy a boat safari along the Victoria Nile to the base of the falls, just meters from the "Devil's Cauldron." For the adventurous, a guided hike to the top of the falls offers breathtaking views of the Nile's raw power, as it cascades through a seven-meter cleft, plunging 45 meters to create a spectacular rainbow.

Overnight: [Paraa Safari Lodge](#) (B, L, D)

May 22 — Murchison Falls / Kibale Forest National Park

Drive through lush countryside, traditional villages, and the dramatic Mountains of the Moon en route to Kibale Forest National Park. Known for its diverse ecosystems, Kibale is home to 70 mammal species, 375 bird species, and 13 species of primates, including chimpanzees. *Overnight:* [Chimpundu Lodge](#) (B, L, D)

May 23 — Chimpanzee Tracking in Kibale Forest National Park

Start your day early with a guided trek to observe chimpanzees in their natural habitat. Your guide will share fascinating insights into the park's primates, flora, and fauna, making this an enriching and memorable experience. *Overnight:* [Chimpundu Lodge](#) (B, L, D)

May 24 — Kibale / Queen Elizabeth National Park

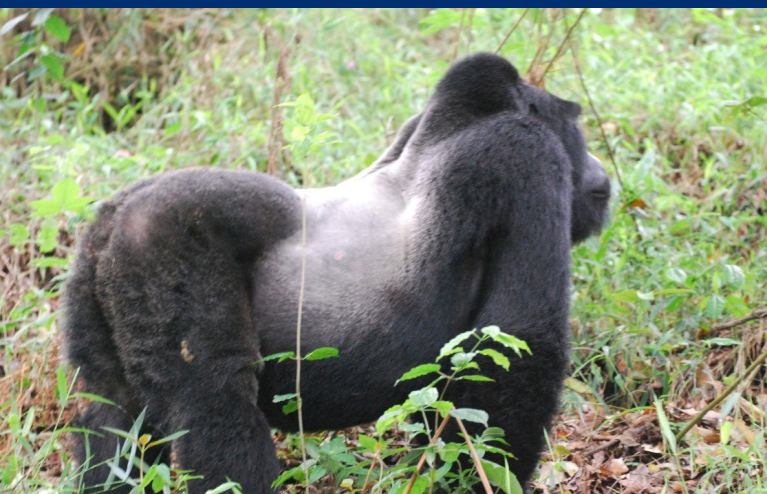
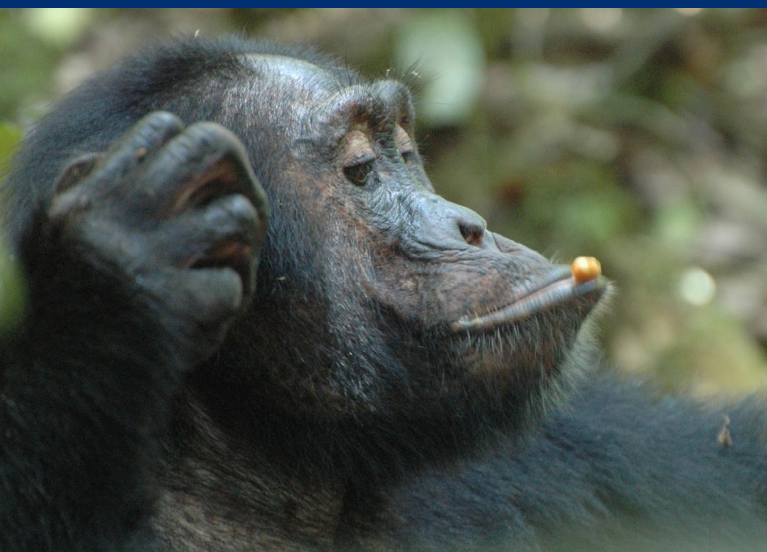
Travel to Queen Elizabeth National Park, tracing the mystical Rwenzori Mountain Range. Upon arrival, spot waterbucks, elephants, leopards, buffaloes, and a variety of antelope species. Time and interest permitting, visit the Katwe Explosion Craters, the park's highest point at 1,350 meters above sea level. Walk down to the salt lakes to meet the locals who earn a living from salt mining. You will get to learn about the salt formation process from the saline waters during the hot season. The creative and hardworking miners will share their experiences of mining and local salt processing. *Overnight:* [Mweya Safari Lodge](#) (B, L, D)

May 25 — Predator Research Excursion / Queen Elizabeth National Park

Set out at dawn with a local predator research team for an exclusive lion-tracking experience. Learn to use telemetry to find the different lion prides who roam the savanna. During the drive, the guides and researchers will discuss lion family dynamics, human-animal conflict, veterinary issues, and conservation efforts all while capturing incredible photos of Uganda's iconic wildlife.

In the afternoon, enjoy a scenic boat cruise on the Kazinga Channel, home to one of the largest concentrations of hippos in Africa. The channel offers exceptional opportunities for bird watching, game viewing, and photography, with over 600 bird species recorded.

Overnight: [Mweya Safari Lodge](#) (B, L, D)



May 26 — Queen Elizabeth National Park / Bwindi Impenetrable Forest

Travel to the famed Bwindi Impenetrable Forest, a UNESCO World Heritage Site that shelters nearly half of the world's remaining mountain gorillas. Upon arrival, explore the Buhoma village to connect with local communities and learn about their traditions and local customs.

Overnight: [Mahogany Springs Lodge](#) (B, L, D)

May 27 — Gorilla Tracking in Bwindi Impenetrable Forest

Early morning start for your gorilla trek. The rainforest is a spectacular, heavily vegetated, and dense landscape crisscrossed by numerous animal trails allowing access for trekkers. This park is best known for its fascinating gorillas. The thrill of spending time with them and observing

these gentle giants is a rare and moving adventure that will leave you with long-lasting memories of a truly unique experience. The gorillas are shy and peaceful animals and it is an unforgettable experience to watch them as they interact with each other.

Overnight: [Mahogany Springs Lodge](#) (B, L, D)

May 28 — Fly to Entebbe / Depart for home or Extension

Fly back to Entebbe, arriving in the late morning. For those with late flights, day rooms will be available until 6:00 PM. Alternatively, extend your journey with an optional safari in Kenya's Maasai Mara or additional gorilla trekking in Rwanda (see details on the next page).





TOUR PRICE

Early signup discount before September 15, 2025: \$12,899 per person *(double occupancy)*
\$1,999 single room supplement *(extremely limited and available on a first come basis)*

After September 15, 2025: \$13,649 per person *(double occupancy)*
\$1,999 single room supplement *(extremely limited and available on a first come basis)*

Includes:

- All airport meet and greet + transfers.
- All accommodations and meals as indicated above.
- Sunset cruise on Lake Victoria.
- 1 soft drink per guest during lunches and 2 glasses of house wine, local beer, or soft drink per guest during dinners.
- Gorilla and chimpanzee trekking permit (one trek per activity type).
- All national park fees, conservation levy, and taxes.
- All safari game drives in 4x4 vehicles with professional English-speaking guides.
- Exclusive access and predator tracking with a local research team.
- Boat cruise at Murchison Falls and Kazinga Channel.
- Bush flight from Bwindi to Entebbe + day room on departure day until 6:00 pm.

Exclusions:

Tips and gratuities to guides, rangers, hotel/ lodge luggage porters, hotel staff, boat crew during cruises, international airfare into/ out of Entebbe (unless traveling on the Kenya extension), visas and passport fees, vaccinations (unless medically waived, proof yellow fever vaccination is required to enter Uganda and when traveling between the East African zone countries), pre-arrival COVID testing (if not fully vaccinated. Fully vaccinated guests must show proof), laundry, beverages other than those mentioned in the inclusions, telephone, fax and internet, travel insurance* including air evacuation to your home country/ state/ city.

**Guests should have enough coverage for additional in-country COVID testing and any necessary hospitalization/ treatment/ isolation/ transport.*

OPTIONAL EXTENSIONS

OPTION A: 4-night Kenya Sojourn, May 28 – June1, 2026

This extension is a wonderful complement to your primate experience in Uganda. The Masai Mara ecosystem is teeming with wildlife across the savanna plains.

\$4,749 *(per person, double occupancy)*

\$925 *(per person, single occupancy)*

- The above includes flights from Entebbe to Nairobi, 1 night in Nairobi, 3 nights at a luxury lodge/ camp (full board basis) all bush flights, airport meet/ greet, accommodations and meal plan as mentioned above, all conservancy and park fees, safari game viewing with professional Guide.
- Does not include: Kenya visas, gratuities, extra services, extra meals, beverages, or yellow fever vaccination (proof required for those traveling from Uganda).

OPTION B: 2-night Gorilla Trek in Rwanda, May 28-30, 2026

Continue your gorilla trekking experience in Rwanda's Volcanoes National Park.

\$4,999 *(per person, double occupancy)*

\$945 *(per person, single occupancy)*

- The above includes transport from Uganda to Rwanda, 1x gorilla trek in Volcanoes National Park, 2 nights at a luxury lodge/ camp (full board basis), gorilla permit and park fees, a self-guided tour of the Dian Fossey Center in Virunga, a visit to the Genocide Museum in Kigali,
- Does not include: Rwanda visas, gratuities, extra services, extra meals, beverages, or yellow fever vaccination (proof required for those traveling between Uganda, Kenya, and Rwanda).

Other customized pre/post trip extensions are available. Please contact Immersion Journeys at info@immersionjourneys.com.

TOUR RESERVATION FORM

To reserve a space, please complete and return this form with your non-refundable deposit of \$1,650 per person (\$2,450 including Kenya Extension/ including Rwanda Extension) payable to Immersion Journeys. You may also fill out an online reservation form. See [link](#) to the on-line reservation. Mail or e-mail the paper registration to: **455 Main Street, Suite 5M, New York, NY 10044/ E-mail: info@immersionjourneys.com**. We will not process your deposit until you are assigned a place on the tour. Please contact 917-686-2620 if you have any questions about the registration process.

☐ Enclosed is my/our non-refundable deposit check of \$ _____ \$1,650 per person/ (\$2,450 including Kenya Extension and/or Rwanda Extension)

☐ Please charge my/our non-refundable deposit of \$ _____ \$1,650 per person (\$2,450 including Kenya Extension and/or Rwanda Extension) to my:

to my: ☐ VISA ☐ MasterCard ☐ American Express Card #: _____

Expiration Date: _____ Security Code (4 digits for AMEX/ 3 digits for others) _____

Authorized Card Holder Signature: _____ Date: _____

Please sign me/us up for the following optional extension:

☐ 3-night Kenya Sojourn

☐ 2-night Gorilla Trek in Rwanda

The balance of the trip is due on February 17, 2026. Payment by check or bank wire only. 3.5% processing fee for credit card payments will be added.

PASSENGER INFORMATION

NAME 1 (as on passport): _____

NAME 2 (as on passport): _____

Passport # _____ Nationality _____

Passport # _____ Nationality _____

Issue _____ (mm/dd/yy) Expiration _____ (mm/dd/yy)

Issue _____ (mm/dd/yy) Expiration _____ (mm/dd/yy)

Date of Birth _____ (mm/dd/yy) CWRU Affiliation _____

Date of Birth _____ (mm/dd/yy) CWRU Affiliation _____

Street Address _____ City _____

Street Address _____ City _____

State _____ ZIP _____

State _____ ZIP _____

Home Phone _____ Mobile _____

Home Phone _____ Mobile _____

Email (write clearly) _____

Email (write clearly) _____

☐ I prefer single accommodations (*Limited to only 2 rooms and on first come basis ONLY.*)

☐ I plan to room with _____ ☐ Double ☐ Twin (*separate beds*)

☐ I prefer to share accommodations (*if roommate is not available, I will pay the single rate*)

Emergency Phone # & Contact Name (during trip): _____

Please indicate any special needs (diet, health, mobility etc): _____

*By submitting my/our non-refundable deposit \$1,650 per person (\$2,450 including Kenya or Rwanda Extension.) I am/we are registering for the 2026 Case Western Reserve University's **Gorillas in the Rift- An Adventure in Uganda** travel program, and have read and agreed to the terms & conditions. I understand that portions of this trip will be strenuous, includes unpaved and steep muddy paths. I/we also agree to be in good physical shape and can walk without a walking aid or wheelchair. I am/ we are also taking responsibility for purchasing our own supplemental travel insurance including medical evacuation in order to participate in this travel program.*

Signature _____ Date _____

Signature _____ Date _____

PARTICIPANT'S AGREEMENT

By signing our tour reservation form, or otherwise indicating your assent in writing, you agree to the terms and conditions set forth in this document. These terms and conditions apply to the Tour, the itinerary for the Tour and payment for the Tour.

1. INTRODUCTION: These are the terms and conditions applicable to the tour packages provided by Immersion Journeys LLC, Case Western Reserve University, Engaging Journeys, Inc. (collectively "Immersion Journeys", "Case Western Reserve University", "Engaging Journeys" "we", "us" and "our"). The terms "client" "you" and "your" refer to each person who purchases and/or uses a tour package provided by Immersion Journeys.

2. RESERVATIONS AND PAYMENTS: A non-refundable deposit of \$1,650 per person /\$2,450 including Kenya or Rwanda Extension. per person per tour is required immediately to secure the gorilla permits, tour and services. **Gorilla and chimpanzee trekking permits are only purchased once the client has signed up for the trip and made the deposit in the above-mentioned amount. Permits are non-refundable and non-transferable once purchased. It is therefore important for clients to purchase trip cancellation insurance.**

The balance of your Tour cost is due 90 days prior to departure.

3. TRAVEL INSURANCE: Trip cancellation insurance is mandatory. In the event that you must cancel your participation in a travel Tour, trip cancellation insurance may be the only source of reimbursement. Trip cancellation insurance is available for comprehensive coverage of such expenses in conjunction with cancellation due to illness or accident, and damaged or lost luggage. In addition, medical evacuation coverage may be required as a condition of booking. **Please contact Sarah S. Doody, sxd618@case.edu, (904) 432-3141 for insurance information..**

4. CANCELLATION AND REFUND POLICY: Our cancellation charges are based on the stringent payment policies of our suppliers of local services and therefore represent a reasonable estimate of our loss. Cancellation charges are expressed as a percentage of your total trip cost (excluding commercial airfare) and also depend on the day you cancel and the day of your scheduled departure from your home. Our cancellation charges are in addition to whatever the airline may charge you:

Penalty	Number of Days of Advance Written Notice
No refund on deposit	Ninety (90) or more
50 percent (50%) of trip cost	Between eighty nine (89) and sixty (60)
One hundred percent (100%) of trip cost	Less than sixty (60)

There is no refund for unused portions of a tour once it has commenced, and you are solely responsible for costs incurred by you due to missed, cancelled or delayed transportation. Your decision not to participate on the Tour due to State Department or Centers for Disease Control advisories or warnings, fear of travel, or for any other reason will be deemed a cancellation. If a flight or other delay for any reason prevents you from joining the Tour on the Tour start date, you will be considered a no-show. No refunds will be available, but you may join the Tour late if you wish.

Commercial airline tickets must be paid in full at the time of ticketing. Airline cancellation charges are set forth on the invoice.

5. NOT INCLUDED: Taxes, passport, visas and associated fees; personal expenses such as laundry, telephone calls and Internet access; accident/sickness, trip cancellation, and baggage insurance; gratuities to ship and hotel personnel; optional sightseeing excursions; baggage charges on aircraft; local departure air/airport tax(es); airfare and associated local taxes, airport facility and security taxes and federal inspection fees not listed as included in the travel Tour; transfers and baggage handling to/from airport/hotel/ship on day(s) of arrival and/or departure; any overnight on land due to flight schedule(s); meals, alcoholic or other beverages and all other services not specifically mentioned as included in the travel Tour.

6. AIRFARE: Airfare is subject to change and availability and, depending on the fare basis, Immersion Journeys.

7. BAGGAGE: Luggage allowance policies are set by the airlines and may change without notice. Baggage is at owner's risk throughout the trip. Airlines, buses, vans and other modes of transportation may all have weight and size restrictions on luggage. It is your responsibility to comply with all baggage restrictions.

8. PRICE INCREASES: Destination countries increase their VAT taxes from time to time. Some suppliers impose energy surcharges or other price increases. Prices are also subject to increase due to currency fluctuations. Any such increases will be applied to your total due at the time of final payment.

9. PASSPORTS, VISAS, and OTHER ENTRY REQUIREMENTS: International travel requires a passport valid 6 months beyond your intended return travel date. In most cases, you will also need to have multiple consecutive blank visa pages within your passport (the number varies depending on the destination(s)). Many destinations also require that visas be

obtained prior to travel. If one parent or guardian plans to bring a minor child without the other parent or parents, some countries and airlines have strict documentation and permission requirements. Birth certificates may be required for children under 18. Some nations require proof of vaccinations for all travelers. Please speak with us if you are unsure about the visa requirements for your travel destination. You are solely responsible for complying with passport, visa, and other foreign entry requirements and vaccinations.

10. RESPONSIBILITY AND ASSUMPTION OF RISK: Immersion Journeys, its employees, shareholders, subsidiaries, affiliates, officers, directors, successors, and assigns (collectively "Immersion Journeys"), do not own or operate any entity which is to or does provide goods or services for your Tour including, for example, lodging facilities, airline, vessel, or other transportation companies, safari or guide services, local ground or safari operators, providers or organizers of optional excursions, food service or entertainment providers, etc. All such persons and entities are independent contractors. As a result, Immersion Journeys is not liable for any negligent or willful act, failure to act, financial failure or other defaults of any such person, entity, supplier or any other third party.

In addition and without limitation, Immersion Journeys is not responsible for any injury, financial or other loss, death, inconvenience, delay, or damage to person or property in connection with the provision of any goods or services whether resulting from, but not limited to, acts of God or force majeure, acts or orders of government, acts of war or civil unrest, insurrection or revolt, bites from or attacks by wild or domestic animals, insects or pests, strikes or other labor activities, criminal or terrorist activities of any kind or the threat thereof, sickness, illness, epidemics or the threat thereof, the lack of availability of or access to medical attention or the quality thereof, overbooking or downgrading of accommodations, mechanical or other failure of airplanes, vessels or other means of transportation, or for any failure of any transportation mechanism to arrive or depart timely or safely. Further, I release Immersion Journeys from its own negligence and assume all risk thereof.

We have no special or unique knowledge regarding the financial condition of the suppliers of services, unsafe conditions, health hazards, weather hazards, or climate extremes at locations to which you may travel. For useful information regarding your destination, we strongly recommend reviewing the destination-specific information at www.travel.state.gov, and the Centers for Disease Control at www.cdc.gov/travel.

If due to weather, flight schedules or other uncontrollable factors, you are required to spend an additional night(s), you will be responsible for your own hotel, transfers and meal costs. The right is reserved to decline to accept as a Tour participant, or remove from a Tour, without refund, any person Immersion Journeys judges to be incapable of meeting the rigors and requirements of participating in the activities, or who is abusive to other Tour participants, leaders or third parties, or who Immersion Journeys determines to detract from the enjoyment of the Tour by others. Specific room assignments are within the sole discretion of the lodge or hotel.

11. CANCELLATIONS AND POSTPONEMENTS BY IMMERSION JOURNEYS: Immersion Journeys reserves the right to change the itinerary, the lodges or hotels utilized or any Tour features at any time and for any reason, with or without notice, and Immersion Journeys shall not be liable for any loss of any kind as a result of any such changes. Immersion Journeys may cancel or postpone a Tour (or an option) for any reason whatsoever. Seasonal changes (for example, from low to high season) may result in higher prices. In any event, for cancellations (or postponements) based upon acts of God or force majeure, acts or orders of government, epidemics or the threat thereof, pandemics, terrorism or the threat thereof, strikes or labor disturbances, demonstrations, riots or civil unrest, criminal activity, supplier default or insolvency, or other similar circumstances, its sole obligation is to issue credits in the full amount of moneys paid to Immersion Journeys, but only to the extent its suppliers are crediting Immersion Journeys with those monies paid by Immersion Journeys to them. Under no circumstances is Immersion Journeys obligated to refund the cost of any purchased travel insurance. Immersion Journeys is not required to cancel any Tour for any reason including without limitation, United States Department of State, Centers for Disease Control, World Health Organization or other Warnings or Advisories of any kind. Immersion Journeys is not responsible for fees assessed by air carriers resulting from operational and/or itinerary changes, even if Immersion Journeys makes the flight arrangements or cancels the Tour. Immersion Journeys reserves the right to substitute lodges, hotels, vessels or attractions for those listed in the tour description if same is required by circumstances beyond its control or for the convenience or well-being of clients.

12. OTHER TAXES AND FEES: Some governments charge departure taxes and/or fees. These fees are the responsibility of each passenger traveling to the designated country and are not included unless stated.

13. FORCE MAJEURE: Immersion Journeys assumes no responsibility for any personal injury, property damage, financial or other loss, accident, delay, inconvenience, or irregularity which may be occasioned by reason of any matter beyond our control including but not limited to a delay or cancellation of a flight that causes you to miss all or any portion of the Tour, acts of God, acts or orders of government, epidemics, war, terrorist acts, riots, disaster, weather events, or strikes.

14. INDEMNIFICATION: You shall indemnify, defend and hold harmless Immersion Journeys, Case Western Reserve University, Engaging Journeys, and its officers, employees, directors, suppliers and agents, in their individual capacities or otherwise, from and against any Losses arising out of: (i) your negligence; (ii) your failure to comply with applicable law; or (iii) your failure to comply with these terms and conditions.

15. PHYSICAL ACCESSIBILITY: All Tours require physical independence and mobility. The Tour requires walking over uneven terrain, some steep hills, muddy and rock paths. It is absolutely imperative that you have independent mobility. At times the walks will be strenuous. Any physical or mental condition that may require special medical attention or physical assistance (for example, the need for a wheelchair) must be reported in writing when you make your reservation. Further, Participants must be able to embark or disembark vans or motor coaches alone or with minimal assistance from your traveling companion and climb stairs and step over raised thresholds without assistance. Participants requiring assistance must travel with a companion who will be responsible for handling equipment. Please understand that the Americans with Disabilities Act does not apply outside the United States. **Please contact Sarah S. Doody, sxd618@case.edu, (904) 432-3141 for insurance information.**

16. CONDUCT DURING TOUR: You are also responsible for respecting the authority and following the directions of the tour guide and the laws of the countries in your itinerary. We may exclude you from participating in all or any part of the tour if, in our sole discretion, your condition or behavior renders you unfit for the tour or unfit for continuation once the tour has begun. Unfitness may include, without limitation, any behavior that, regardless of its cause, is inappropriate or offensive or interferes with the delivery of tour services, or may constitute a hazard or embarrassment. In such case, our liability shall be strictly limited to refund of the recoverable cost of any unused portion of the tour. Should you decide not to participate in certain parts of the tour or use certain goods included in the tour, no refunds will be made for those unused parts of the tour or goods.

17. MEDICAL PROXY: If you are unable to authorize your own medical attention and treatment, you authorize Immersion Journeys or its subcontractors or agents to authorize medical attention and treatment on your behalf. You agree to hold harmless and release Immersion Journeys from any liability for medical attention arranged or not arranged on your behalf. Immersion Journeys assumes no liability regarding provision of medical care or evacuation services.

18. CHANGES: Changes in this Agreement may be made only in writing, signed by an officer of Immersion Journeys.

19. SUPPLEMENTAL RELEASE: This Supplemental Release is supplemental to and not in limitation of the Agreement and Release from Liability, Assumption or Risk and Arbitration Agreement ("Release") I/we previously signed. Except as modified herein, that Release remains in full force and effect. I understand that Immersion Journeys, LLC. ("Immersion Journeys") does not own, operate, control or supervise any person or entity which provides hot air balloon trips or hot air balloon equipment and that it makes no representations whatsoever as to the adequacy or safety of any such person or entity or of any such equipment. In addition, I understand that Immersion Journeys is giving me information about this trip, or booking it only as a courtesy to me. I understand there are various risks of injury, inconvenience and death associated with hot air ballooning. These include, but are not limited to, crashes, uncontrollable wind currents which, among other things, could cause hard landings (dragging of the balloon which in turn could cause injury or death), the possibility of a fire as a result of a drag or crash, landing in an area different from that anticipated, defective equipment, etc. I assume all such risks and specifically release Immersion Journeys from any and all claims of negligence, gross negligence, breach of contract or any other claim with regard to my hot air ballooning trip. I further understand that medical aid may be unavailable during the course of my balloon safari, evacuation to any medical facility difficult and lengthy, and that any such facility (or medical personnel) may not be of the quality of facilities or medical personnel in the United States.

20. ADDITIONAL RELEASES: Some hotels, lodges, local safari operators, airlines and other suppliers might require you to sign their own releases as a condition of your utilizing their services. Upon request, we would be happy to request a copy of those releases from those suppliers.

21. BINDING ARBITRATION: Any dispute concerning, relating or referring to this Agreement, the brochure or any other literature concerning the Tour, or the Tour itself, shall be resolved exclusively by binding arbitration pursuant to the Federal Arbitration Act, 9 U.S.C. Sections 1-16, either according to the then existing Commercial Rules of the American Arbitration Association (AAA) or pursuant to the Comprehensive Arbitration Rules & Procedures of the Judicial Arbitration and Mediation Services, Inc. (JAMS). Such proceedings will be governed by substantive (but not procedural) State of New York law and will take place in New York City, New York. The arbitrator and not any federal, state, or local court or agency shall have exclusive authority to resolve any dispute relating to the interpretation, applicability, enforceability, conscionability, or formation of this contract, including but not limited to any claim that all or any part of this contract is void or voidable. Please understand that by agreeing to these terms and conditions, the participant and Immersion Journeys are waiving the right to a trial by jury. Any arbitration commenced against Immersion Journeys must be on behalf of only the signatory to this Agreement and his or her immediate family members who travelled with signatory, such as a spouse or child. Under no circumstances can participant be part of a class or other joint action.

By signing the Tour Registration form, you agree to the terms of this Terms and Conditions, Release of Liability, Assumption of Risk, Supplemental Release and Binding Arbitration Agreement. Your Agreement extends to any tour to which you may transfer. If you party includes a person under 18, then you represent that you are that person's parent or legal guardian.